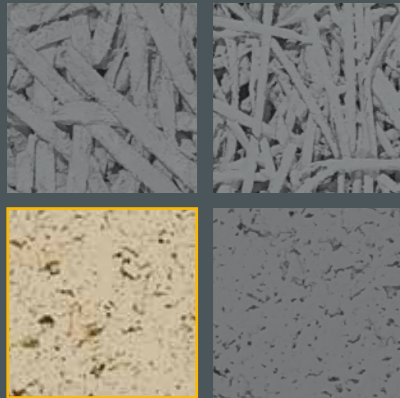




Mental Hospital, Helsingør, Denmark, Heradesign *superfine*





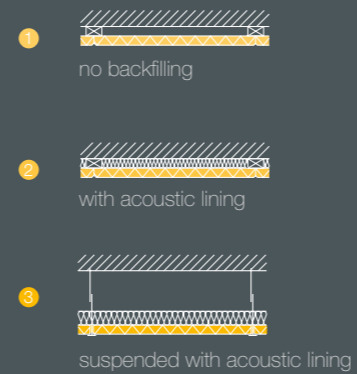
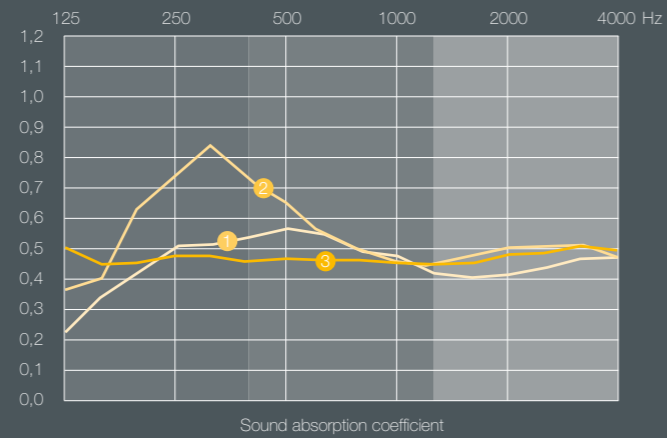


## Heradesign® *micro*

1-layer magnesite bonded wood wool acoustic panel with fine pored surface - building biology recommended.

Nominal size mm	600 x 600 1200 x 600	625x625 1250x625
Thickness mm	25	35
Weight kg/m <sup>2</sup>	15,0	19,0

- Almost any colour from international colour schemes (RAL, NTSC, StoColor etc) can be selected
- Sound absorption value  $\alpha_w$  up to 0,55
- Reaction to fire according to EN 13501-1: B-s1, d0



wood wool concentration  
well-being ecology architecture  
design sports & leisure performance  
colours nature office  
infrastructure green label  
entertainment world wide commercial  
ceilings premium brand room atmosphere  
walls timeless education

HUG AG, Malters, Switzerland, Heradesign *superfine*



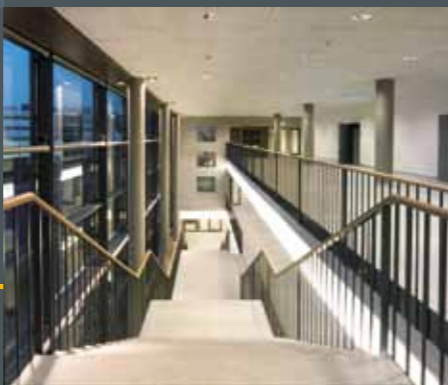


Unilever Headquarters, Hamburg, Germany,  
*Heradesign superfine*





Kiska Design, Anif, Salzburg, Austria, Heradesign *superfine*



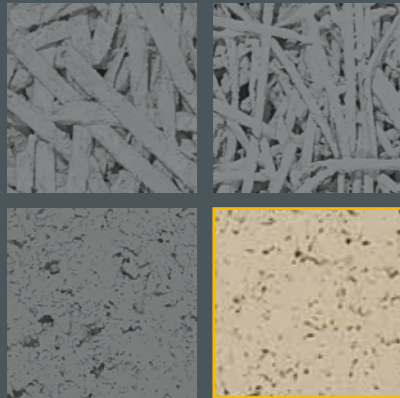
Training center military, Kriens, Switzerland, Heradesign *fine*





Citizens advice bureau, Weinstadt, Germany,  
Heradesign *superfine*



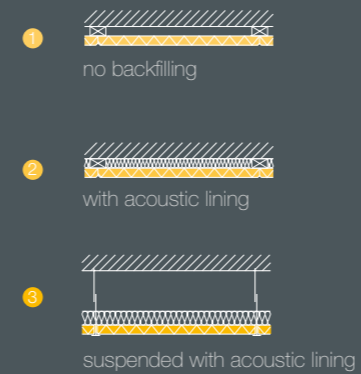
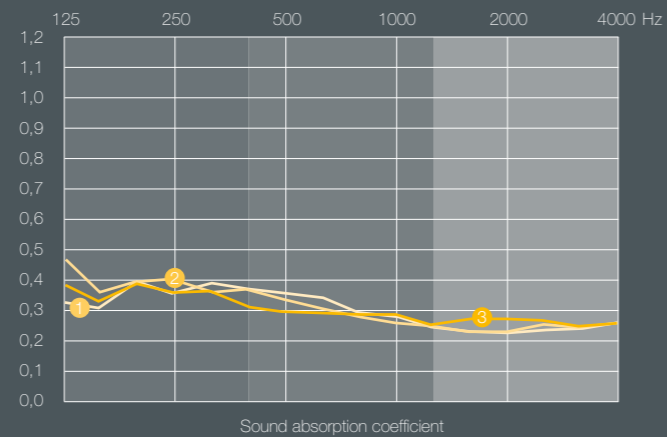


## Heradesign® *plano*

1-layer magnesite bonded wood wool acoustic panel with closed surface - building biology recommended.

Nominal size mm	600 x 600 1200 x 600
Thickness mm	25
Weight kg/m <sup>2</sup>	15,0

- Almost any colour from international colour schemes (RAL, NTSC, StoColor etc) can be selected
- Sound absorption value  $\alpha_w$  up to 0,35
- Reaction to fire according to EN 13501-1: B-s1, d0



wood wool concentration  
walls well-being  
office ecology **commercial**  
design sports & leisure performance  
nature premium brand green label  
architecture **entertainment**  
colours ceilings world wide room atmosphere  
timeless infrastructure education

Restaurant Waku Waku, Hamburg, Germany, Heradesign *superfine*





Restaurant Picasso, Gijón, Spain, Heradesign *superfine*



Shopping & Entertainment centre „GRENN“, Orel, Russia, Heradesign *fine*



Endemol Studios, Amsterdam, the Netherlands,  
Heradesign *fine*



Mc Donald's, Klagenfurt, Austria,  
Heradesign *superfine*



Mc Donald's, Paris, France,  
Heradesign *superfine*

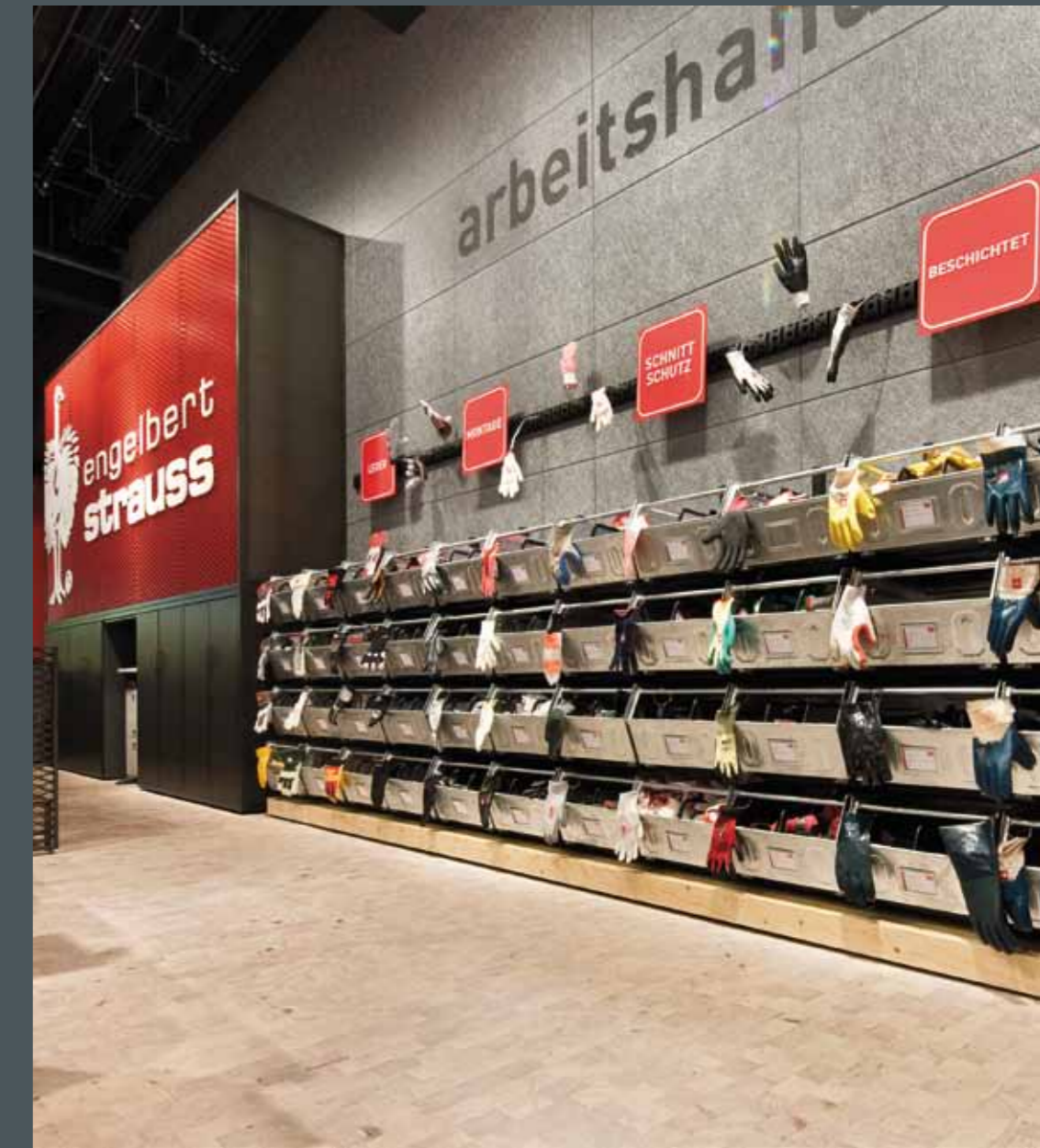


Art City, De Singel, Antwerp, Belgium,  
Heradesign *fine*



Alhóndiga, cultural centre, Bilbao, Spain, Heradesign *fine*







**Heradesign®**

for good architecture

A business unit of Knauf Insulation GmbH

Heradesign Ceiling Systems  
A-9702 Ferndorf 29, Austria  
Phone +43 4245 2001-3003  
Fax +43 4245 2001-3499  
office@heradesign.com

[www.heradesign.com](http://www.heradesign.com)